



Chidley Cottage Midgham, Fordingbridge, Hampshire, SP6 3BY

£1,875 PCM

Accommodation comprises:

Entrance into a boot room with storage cupboard, washing machine and tumble dryer. Cloakroom. From the boot room an open doorway leads into a large and airy living room with double aspect, built in desk, woodburning stove and French doors onto the garden. Step down to a kitchen/dining area with ceramic hob, electric oven, dishwasher and fridge/freezer. Bedroom one, double with fitted wardrobes. Bedroom two, double with double aspect and en-suite shower room. Bedroom three, double with fitted wardrobes. Modern family bathroom with hand held shower.

Outside; enclosed private garden with decked area and raised beds, greenhouse. Parking for 2 cars to the front.

The property benefits from hard flooring throughout, underfloor heating and double glazing. There is a monthly charge of £50 for water and fast broadband.

A Note From the Whites Letting Team

Thank you for considering Whites as your letting agent. As a proud member of the Royal Institution of Chartered Surveyors (RICS), we aspire to uphold its core values by providing a fair, efficient, and transparent service for all prospective tenants. Below we've outlined how we manage property enquiries and applications to help set expectations and guide you through the letting application process.

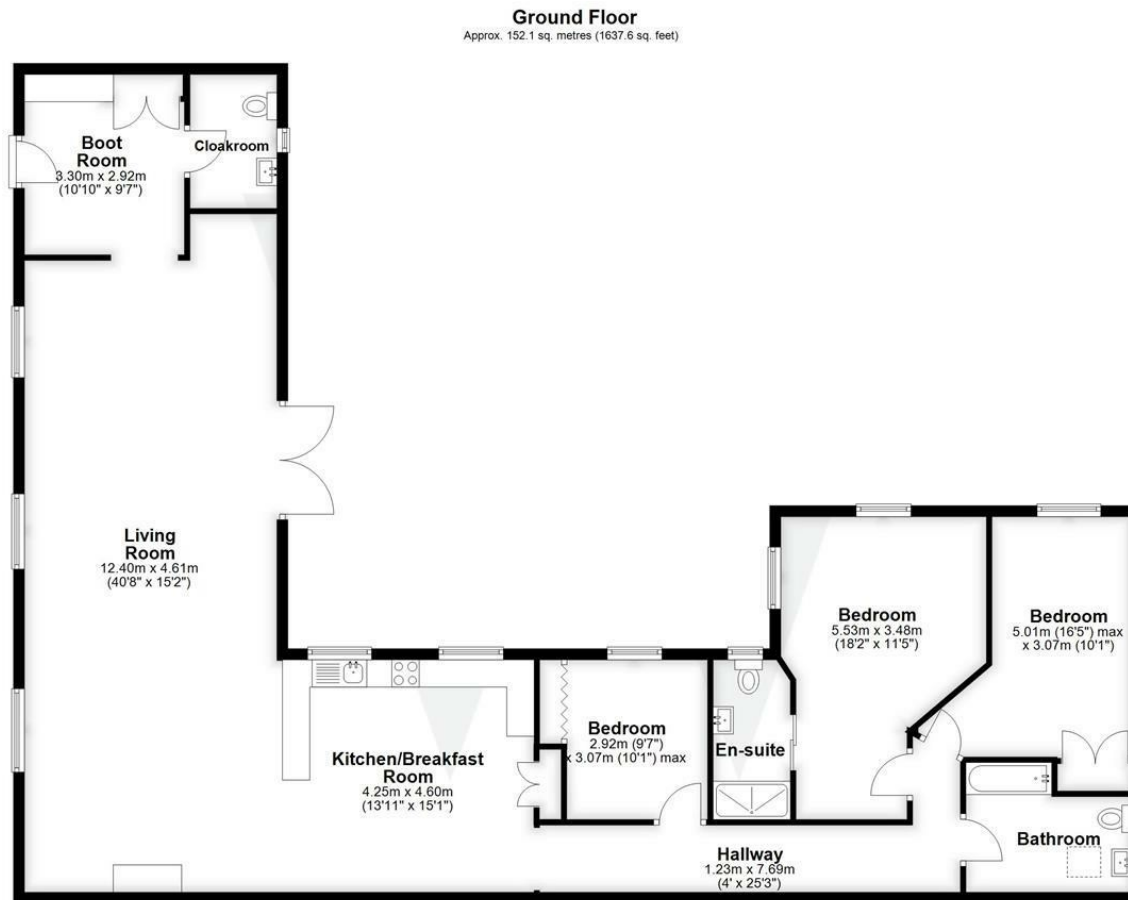
To begin the process of enquiring about one of our properties, please click the 'Request Further Details/Info' button on the property listing. This will send us your contact information, and we'll get back to you as soon as possible with a short questionnaire to complete. Once we've received your completed questionnaire, your enquiry will be registered with the relevant Property Manager. Please note, only those who complete this step will be considered as having formally enquired about the property.

Due to the high level of interest we often receive, we regret that we aren't often able to offer everyone a viewing. Where possible, we handle enquiries in the order they are received and arrange viewings in groups of up to 4 for the first round. If the property remains available, an additional round of viewings may be scheduled. To manage expectations, we may also temporarily pause

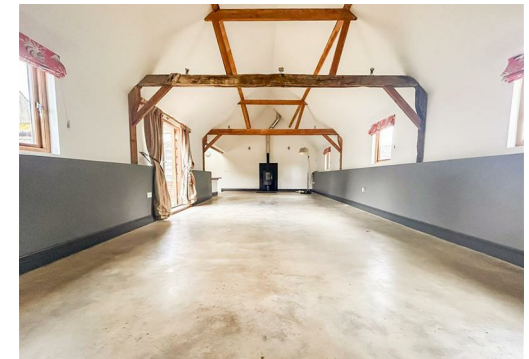
viewings to review enquiries. If this happens, we'll do our best to update the property listing accordingly.

Please note that applications are not decided on a first-come, first-served basis. We aim to ensure a fair process for everyone, and all applications will be carefully considered on its merits by us, in conjunction with the landlord, before a final decision is made.

The availability date listed is provisional and will only be confirmed once referencing has been successfully completed.



Total area: approx. 152.1 sq. metres (1637.6 sq. feet)



Energy Efficiency Rating		Current	Potential
Very energy efficient - lower running costs			
(92 plus)	A		
(81-91)	B		
(69-80)	C		
(55-68)	D	68	76
(39-54)	E		
(21-38)	F		
(1-20)	G		
Not energy efficient - higher running costs			
England & Wales		EU Directive 2002/91/EC	

WHITES
Castle Chambers, 47 Castle Street, Salisbury,
Wiltshire, SP1 3SP
01722 336422
www.hwwwhite.co.uk
residential-sales@hwwwhite.co.uk

